

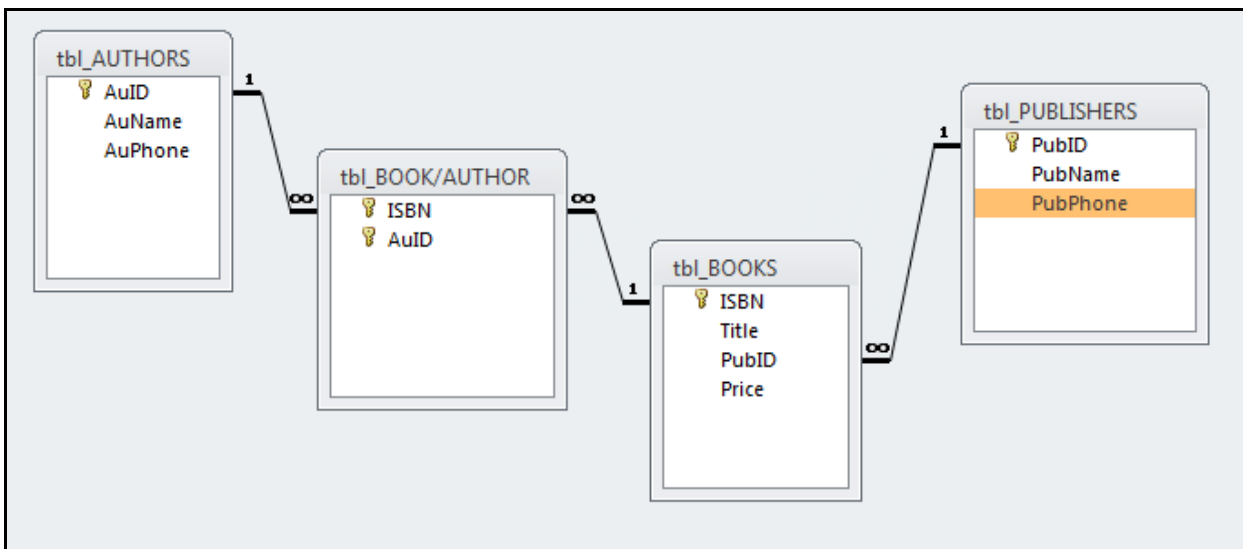


Create the library database based on the design shown below:

Create all tables first. Next either create the relationships first and subsequently enter the data or enter the data first and then create the relationships.

Notes:

- Name the tables according to their subject.
- Decide on appropriate data types and lengths.
- Do not use input masks and/or formats!
- Create a primary key for every table.
- Save all tables with the prefix tbl_.
- When creating relationships use the checkbox Enforce Referential Integrity



Notes:

1. Primary key/foreign key pairs must have the same data type and field size.
2. A primary key field having an AutoNumber data type must be matched with a Long Integer data type on the foreign key side.
3. To create a composite primary key, select all fields and then click on the primary key toolbar button.
4. When creating relationships, always use referential integrity. This is one of the most important validations of data.
5. Due to referential integrity, data must be entered from the parent to the child. In this example, start out with either the tables tbl_Authors or tbl_Publishers. Then enter data into the table tbl_Books. Finally, enter data into the table tbl_Book/Author.